



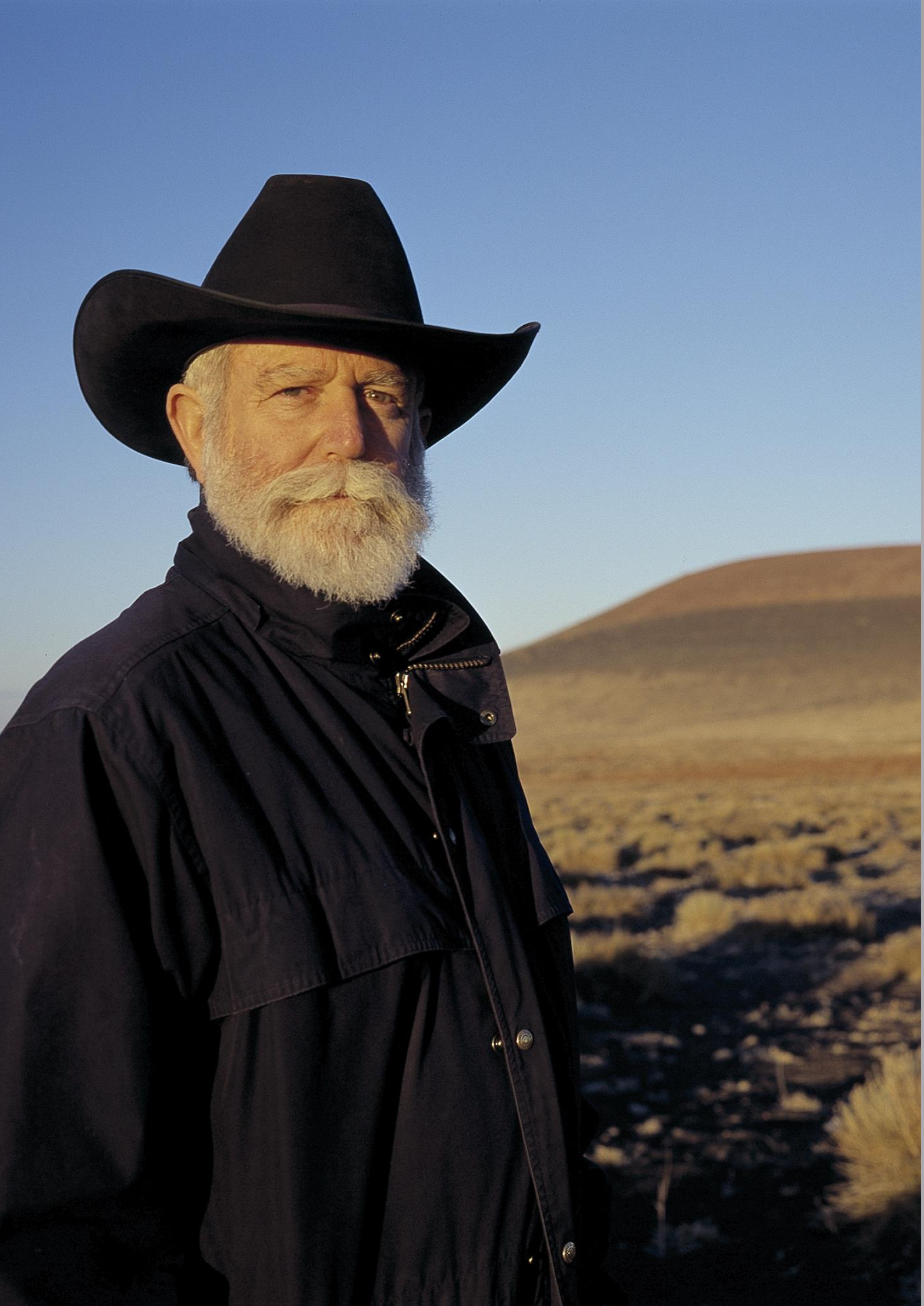
James Turrell
«Opus Magnum: Roden Crater»

James Turrell

James Turrell (*1943 in Los Angeles) is a key member of the California Light and Space movement and one of the most renowned living artists today. His practice is dedicated to the sensorial experience of colour, light, and space, inviting audiences to question their perception of reality.

Among his most iconic series, the Skyspaces (1974–) are architectural installations designed to frame the sky, providing a unique perceptual experience based on natural and artificial light. Through his monumental, ongoing Roden Crater project (1977–), Turrell is creating a large-scale artwork and naked-eye observatory inside a dormant volcano in the Painted Desert of Northern Arizona. The Ganzfeld series (1976–) features large-scale installations that envelop the viewer in a continuous field of light, creating an immersive experience. These works have redefined the boundaries of contemporary art, often straddling the line between installation and sensory science.

James Turrell has received distinctive honors such as the MacArthur Fellowship (USA, 1984), the National Medal of Arts (USA, 2013), the Guggenheim Fellowship (USA, 1981), and the Praemium Imperiale (Japan, 2013). His works have been showcased in prestigious exhibitions worldwide, including the Solomon R. Guggenheim Museum (USA), Tate Modern (UK), Museum of Fine Arts Houston (USA), Los Angeles County Museum of Art (USA), and Centro Botín (Spain).



James Turrell «Opus Magnum: Roden Crater»

«To get to a place where you are looking at light itself requires a suspension of time, a slowing down. Also a focus, so that it is the only aspect you are looking at.»

JAMES TURRELL

In the 1960s, the Light and Space Movement emerged in Southern California, operating at the intersection of Minimalism, Geometric Abstraction, and Op Art, and exploring sensory environments through light-based materials. As one of the most radical artists of this generation, James Turrell (*1943) elevates light itself to the status of artistic medium. The materiality of light has defined his artistic practice for more than six decades. At its nucleus stands Roden Crater, one of the largest Land Art projects in the history of art. Since 1974, and based on Turrell's astronomical and geological calculations, 24 experiential spaces and six tunnels have been realised. Once completed, they will, as the artist describes, «bring a piece of the sky down».

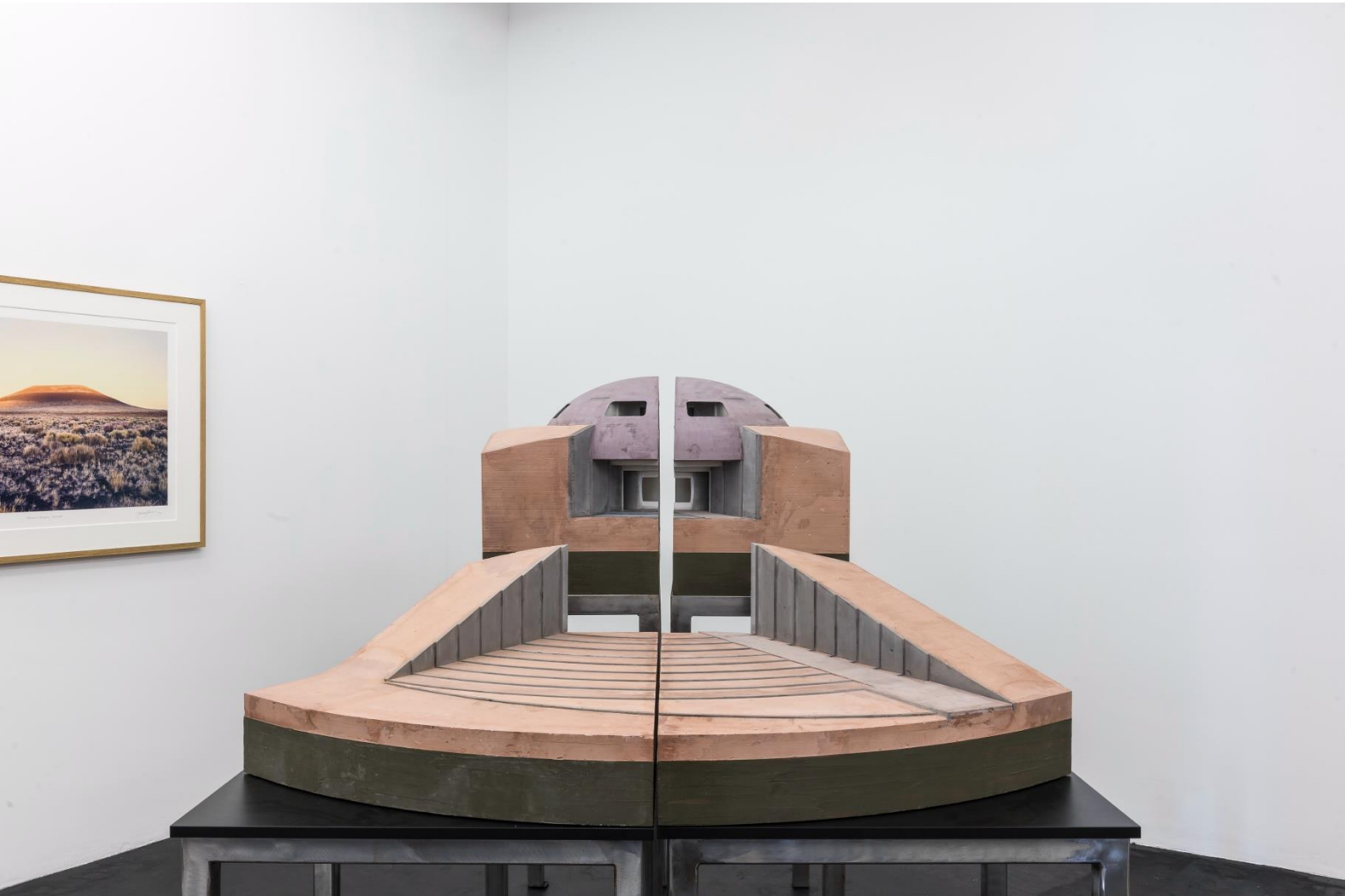
The exhibition [«James Turrell. Opus Magnum: Roden Crater»](#) at Häusler Contemporary brings together a historic model, sculptures, and prints that emerged from the intensive engagement with Roden Crater and constitute autonomous artistic works within the oeuvre of Turrell.

Original Model «Fumarole Space» (1998)

The *Fumarole* forms the portal to Roden Crater and the first point of contact with Turrell's project – in the exhibition, the model functions as the central work, linking the works on paper and the sculpture into a shared conceptual framework.

Schematically positioned between Crater-Zentrum (*Crater's Eye*) and the easternmost point (*East Space*), the *Fumarole* forms the main entrance to the crater. A staircase leads up the volcanic cinder cone to a space that is almost entirely embedded within the volcano. Within it lies a spherical chamber, partially open at several points, with a diameter of nearly 13 metres. When the exterior door is closed, the sphere functions as a Camera Obscura, allowing a projected image of the Painted Desert to appear inside through its viewing aperture. This central site, which enables new perceptions of time and space, was presented by Turrell in 1998 in the model «Fumarole Space».

Häusler Contemporary is pleased to present the historic original model from the artist's studio, which, in four parts, offers rare insights into one of the largest and most complex architectures of the crater. The space is planned, but has not yet been constructed. The four-part model offers a variety of presentation possibilities, as its individual components can be arranged together or apart, revealing different perspectives on the exterior and interior of the Fumarole.



Installation view

James Turrell «Fumarole Space», 1998

Plaster, four parts | Original model from the artist studio

Size 87 x 164 x 55 cm (34 1/4 x 64 5/8 x 21 5/8 inches)

© James Turrell, photo: Peter Baracchi

Background: James Turrell «Sunset at Roden Crater» (I.)



Installation view

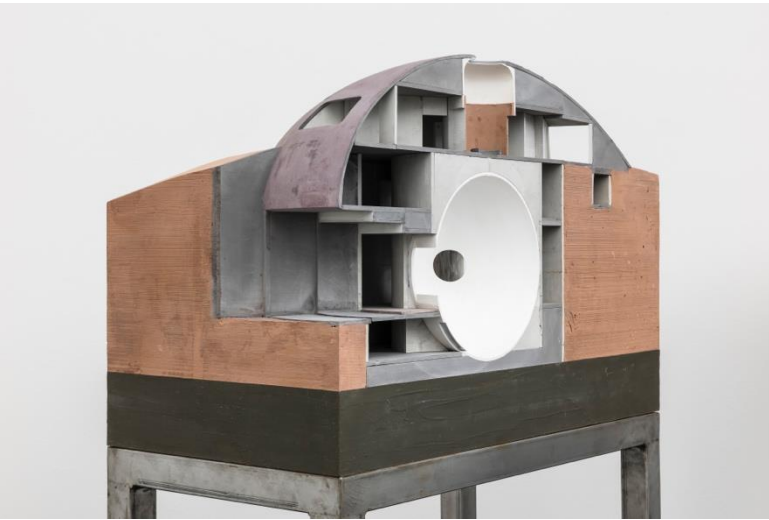
James Turrell «Fumarole Space», 1998

Plaster, four parts | Original model from the artist studio

Size 87 x 164 x 55 cm (34 1/4 x 64 5/8 x 21 5/8 inches)

© James Turrell, photo: Peter Baracchi

Background: James Turrell «Sunset at Roden Crater» (I.)



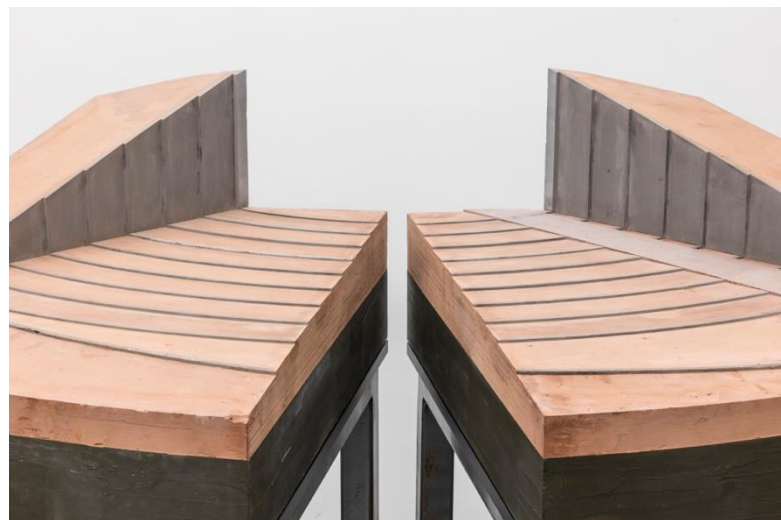
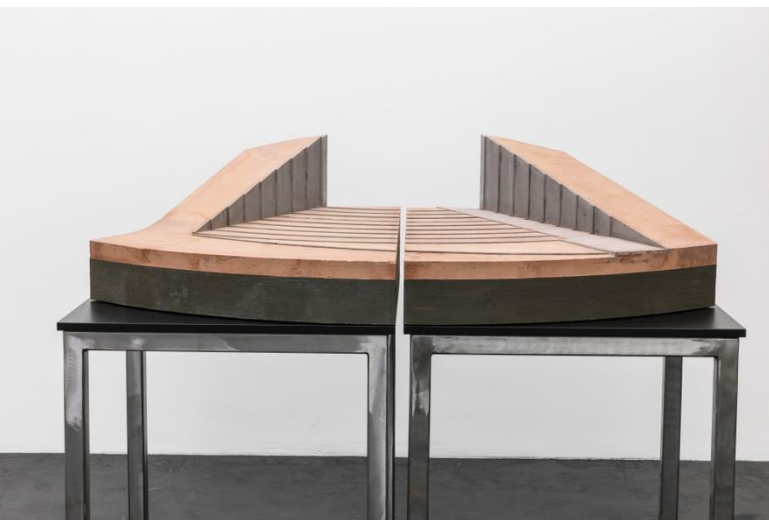
Details

James Turrell «Fumarole Space», 1998

Plaster, four parts | Original model from the artist studio

Size 87 x 164 x 55 cm (34 1/4 x 64 5/8 x 21 5/8 inches)

© James Turrell, photo: Peter Baracchi



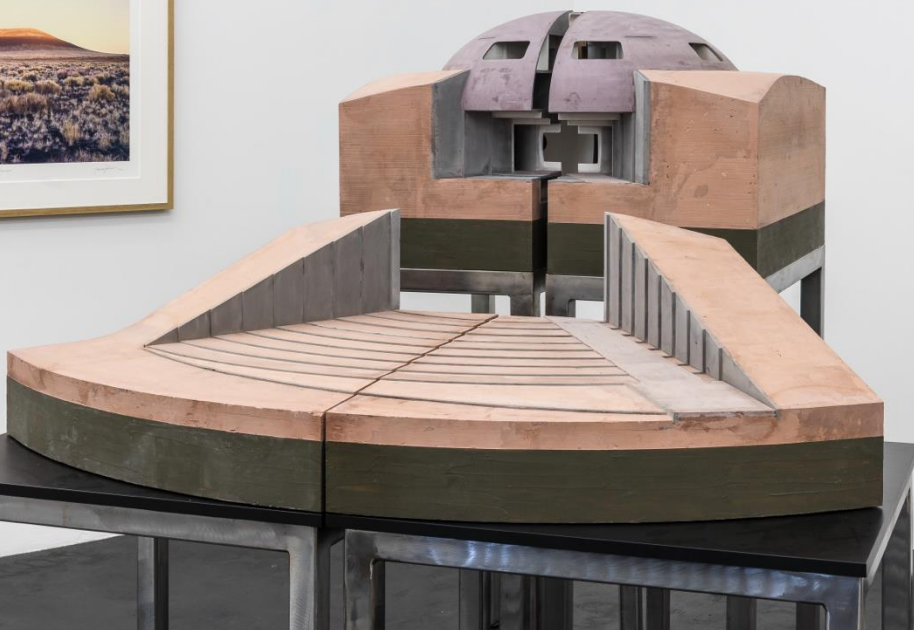
Details

James Turrell «Fumarole Space», 1998

Plaster, four parts | Original model from the artist studio

Size 87 x 164 x 55 cm (34 1/4 x 64 5/8 x 21 5/8 inches)

© James Turrell, photo: Peter Baracchi



Installation view

James Turrell «Fumarole Space», 1998

Plaster, four parts | Original model from the artist studio

Size 87 x 164 x 55 cm (34 1/4 x 64 5/8 x 21 5/8 inches)

© James Turrell, photo: Peter Baracchi

Background: James Turrell «Sunset at Roden Crater» (I.)



Installation view

James Turrell «Fumarole Space», 1998

Plaster, four parts | Original model from the artist studio

Size 87 x 164 x 55 cm (34 1/4 x 64 5/8 x 21 5/8 inches)

© James Turrell, photo: Peter Baracchi

Background: James Turrell «Blue Sky over Roden Crater» (r.)

James Turrell «Sunset at Roden Crater» (l.)

Selection of further works in the exhibition



James Turrell, «Blue Sky over Roden Crater», 2009
Color Carbon Print | Ed. 30 | Image 61 x 76.2 cm | Frame 88 x 105 x 4.5 cm



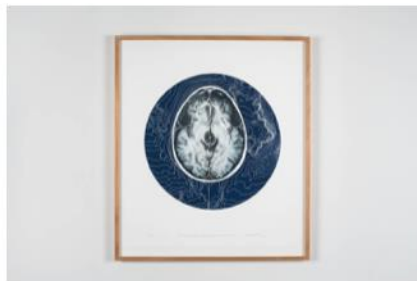
James Turrell, «Sunset at Roden Crater», 2009
Color Carbon Print | Ed. 30 | Image 61 x 76.2 cm | Frame 88 x 105 x 4.5 cm



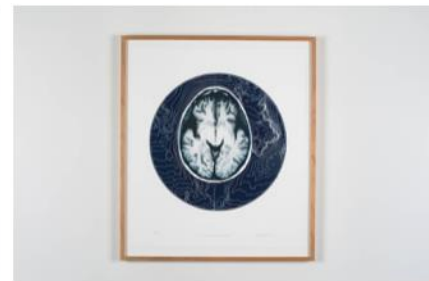
James Turrell, «Roden Crater Site Plan», 2020
Inkjet Blueprint | Ed. 100 | Sheet 112 x 137 cm | Frame 113.5 x 139 x 4 cm



James Turrell «Roden Crater Site Plan», 2025
Photogravure print on handmade paper | Ed. 30
Sheet size 83.8 x 73.6 cm, frame size 93 x 81 cm



James Turrell «R.C. Roads, Spaces, Alan Waters Shape, Brain Scan», 2025
Photogravure print on handmade paper | Ed. 30
Sheet size 83.8 x 73.6 cm, frame size 93 x 81 cm



James Turrell «Alan Waters, Brain Scan», 2025
Photogravure print on handmade paper | Ed. 30
Sheet size 83.8 x 73.6 cm, frame size 93 x 81 cm



James Turrell «Roden Crater Site Plan along the Summer Solstice Axis», 2024
Gold leaf and glass | Ed. 3/30 | 45.7 x 36.1 x 12.7 cm



James Turrell «Grand Falls Next to Roden Crater», 2009
b/w pigment print | Ed. 6/30 | Recto signed and numbered
Sheet 60 x 60.5 cm, Frame 104 x 91 cm



James Turrell «Deep Sky», 1984
Aquatint etching on Rives BFK paper
Sheet size 32.4 x 49.5 cm | frame size, 7 parts, each 53.3 x 68.6 cm

Your Partner in Collecting Art

Founded in 1988 by Wolfgang and Dr. Christa Häusler, Häusler Contemporary has developed a distinctive profile at the intersection of art, architecture, and light-based installation. We are proud to have realised projects for private clients and large-scale commissions featuring works by James Turrell worldwide for over 30 years.

A selection of our accomplished projects is presented below.



«Skyspace Sustenance»
Children's Hospital, Zurich (CH)



«Skyspace Ta Khut»
José Ignacio, Uruguay (URY)



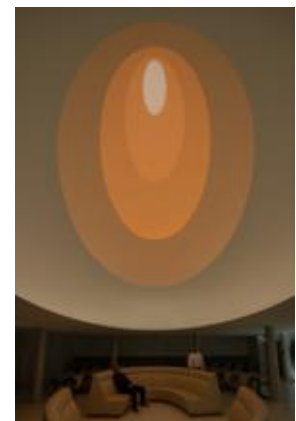
«Skyspace Piz Uter»
Zuoz, Graubünden (CH)



«Skyspace Lech»
Lech am Arlberg (AT)



«A CHAPEL FOR LUKE»
Diocesan Museum Freising (DE)



Skylight «Thought as Light»
Clinic Warendorff, Sehnde (DE)



Chapel Dorotheenstädtischer Cemetery | Berlin (DE)



Ganzfeld «APANI»
Biennial Venedig (IT)



Ganzfeld «Aural»
Jewish Museum, Berlin (DE)



For further information, please contact us at:
Wolfgang Häusler | +49 177 725 1472 | wh@haeusler-contemporary.com
Susanne Kirchner | +41 43 810 04 26 | zuerich@haeusler-contemporary.com

Häusler Contemporary Zürich
Stampfenbachstrasse 59
8006 Zurich | Switzerland
www.haeusler-contemporary.com

Photo: James Turrell and Wolfgang Häusler, Museum Jumex, Mexico-City
© James Turrell | Photos: Florian Holzherr / Peter Baracchi